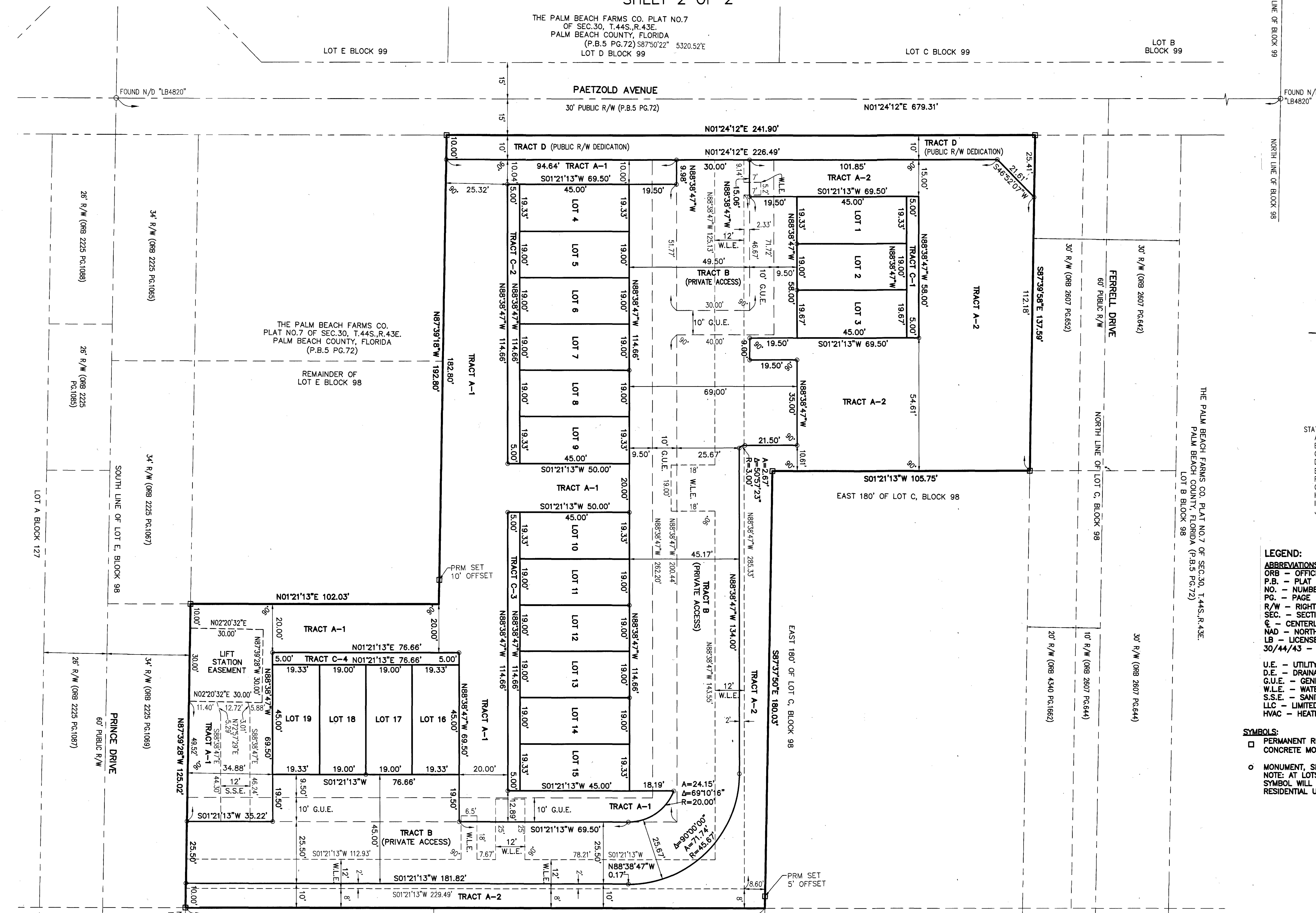


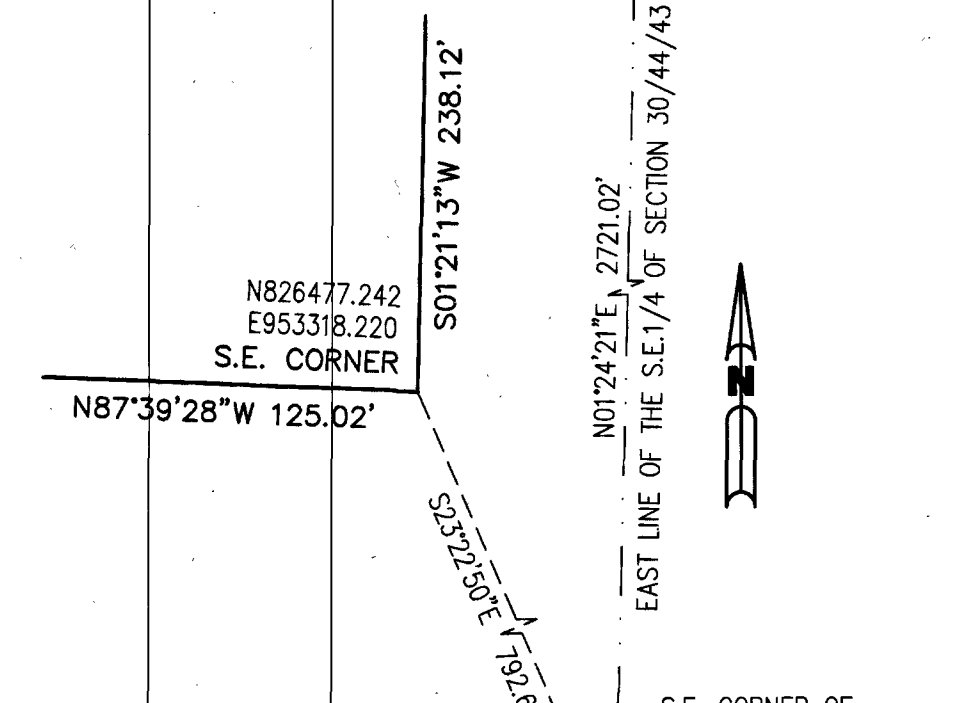
PRINCE PLACE

A REPLAT OF A PORTIONS OF LOTS C, D, AND E, BLOCK 98, THE PALM BEACH FARMS CO. PLAT NO.7, RECORDED IN PLAT BOOK 5 PAGE 72, PUBLIC RECORDS OF PALM BEACH COUNTY, FLORIDA, LYING IN THE SOUTHEAST QUARTER (S.E. 1/4), OF SECTION 30, TOWNSHIP 44 SOUTH, RANGE 43 EAST, VILLAGE OF PALM SPRINGS, PALM BEACH COUNTY, FLORIDA
 SHEET 2 OF 2

2



E.1/4 CORNER SECTION 30/44/43
 FOUND PBC BRASS DISK
 PBC POSITION:
 N828469.949
 E953699.554

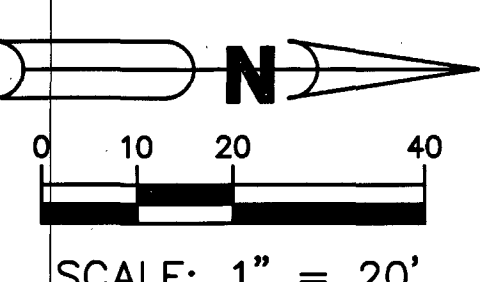


STATE PLANE COORDINATES:
 A. COORDINATES SHOWN ARE GRID
 B. DATUM - NAD 83, 1990 ADJUSTMENT
 C. ZONE - FLORIDA EAST
 D. LINEAR UNIT - US SURVEY FOOT
 E. COORDINATE SYSTEM 1983/1990 STATE PLANE
 F. TRANSVERSE MERCATOR PROJECTION
 G. ALL DISTANCES ARE GROUND, UNLESS NOTED OTHERWISE
 H. SCALE FACTOR - 1.000421
 I. GROUND DISTANCE X SCALE FACTOR = GRID DISTANCE
 J. ROTATION EQUATION: NONE

COORDINATE DETAIL (NOT TO SCALE)

- LEGEND:**
ABBREVIATIONS:
 ORB - OFFICIAL RECORD BOOK
 P.B. - PLAT BOOK
 NO. - NUMBER
 PG. - PAGE
 R/W - RIGHT-OF-WAY
 SET S. - SECTION
 C. - CENTERLINE
 NAD - NORTH AMERICAN DATUM
 LB - LICENSED BUSINESS
 30/44/43 - SECTION 30, TOWNSHIP 44 SOUTH, RANGE 43 EAST
 U.E. - UTILITY EASEMENT
 D.E. - DRAINAGE EASEMENT
 G.U.E. - GENERAL UTILITY EASEMENT
 W.L.E. - WATER LINE EASEMENT
 S.S.E. - SANITARY SEWER EASEMENT
 LLC - LIMITED LIABILITY COMPANY
 HVAC - HEATING, VENTILATION, AND AIR CONDITIONING

- SYMBOLS:**
 PERMANENT REFERENCE MONUMENT (P.R.M.), SET 4"x4" CONCRETE MONUMENT WITH DISK STAMPED "LB6473"
 MONUMENT, SET 1/2" IRON ROD WITH "BROWN & PHILLIPS" CAP
 NOTE: AT LOTS 1-19, LOT CORNERS NOT SHOWN WITH A MONUMENT SYMBOL WILL BE MONUMENTED BY THE PHYSICAL LIMITS OF THE RESIDENTIAL UNITS CONSTRUCTED.



PREPARING SURVEYOR & MAPPER'S STATEMENT
 THIS INSTRUMENT WAS PREPARED BY
 JOHN E. PHILLIPS III, P.S.M. 4826

BROWN & PHILLIPS, INC.
 CERTIFICATE OF AUTHORIZATION # LB 6473
 1860 OLD OKEECHOBEE RD., SUITE 509
 WEST PALM BEACH, FLORIDA 33409
 561-615-3988, 615-3986 FAX